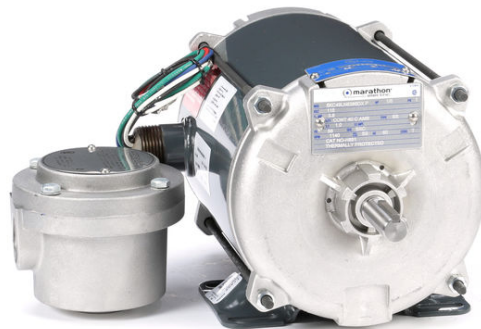


# PRODUCT INFORMATION PACKET

Model No: 5KC49LN6386

Catalog No: H891

0.17 HP Explosion Proof Motor, 1 phase, 1200 RPM, 115 V, 56 Frame, EPNV  
Explosion Proof NEMA Motors



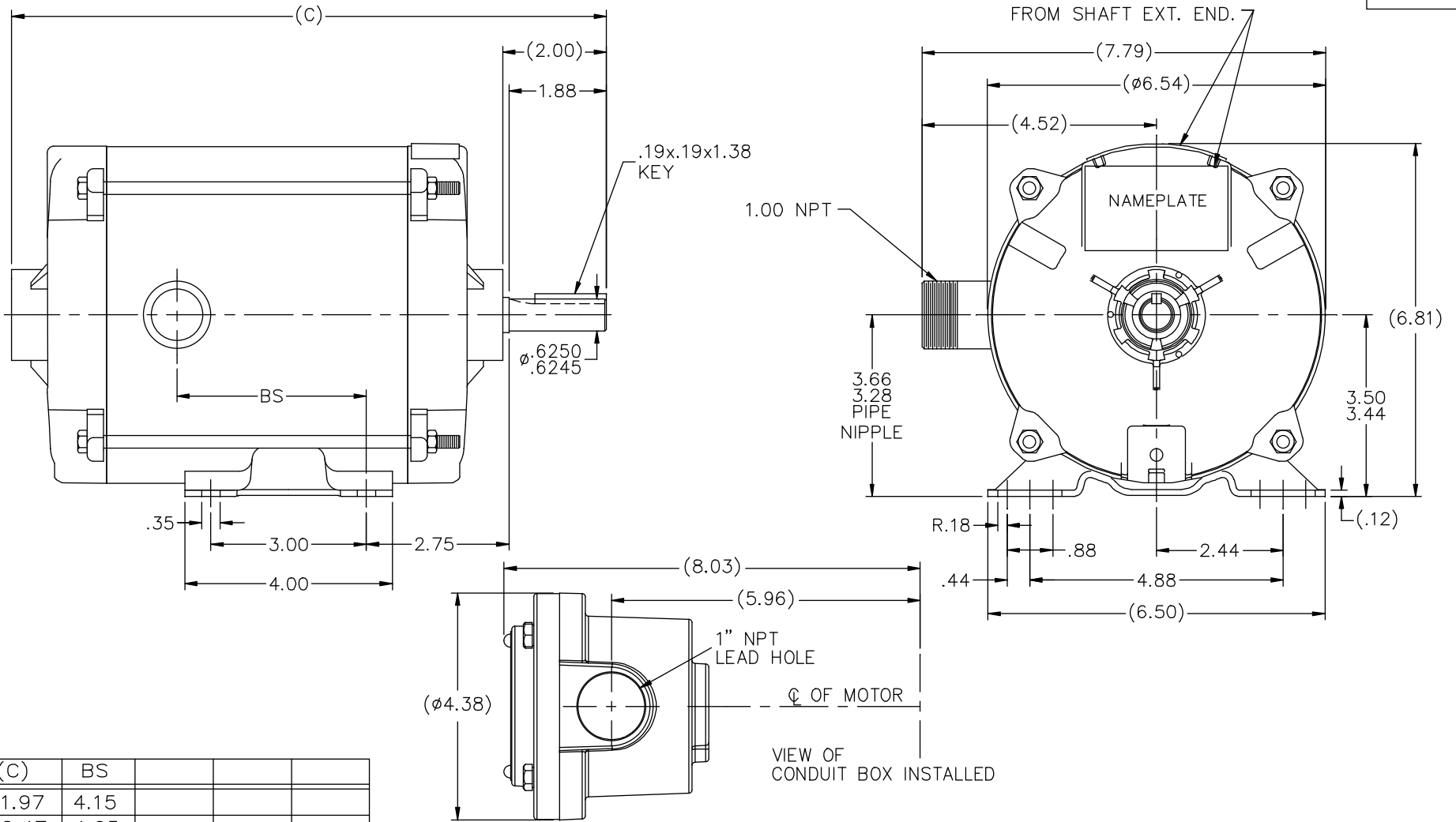


### Nameplate Specifications

Output HP	0.17 Hp	Output KW	0.13 kW
Frequency	60 Hz	Voltage	115 V
Current	4.1 A	Speed	1140 rpm
Service Factor	1	Phase	1
Efficiency	55 %	Power Factor	54
Duty	Continuous	Insulation Class	B
Design Code	NO DESIGN CODE	KVA Code	T
Frame	56	Enclosure	Explosion Proof Non Ventilated
Thermal Protection	Automatic	Ambient Temperature	40 °C
Drive End Bearing Size	6203	Opp Drive End Bearing Size	6203
UL	UL Listed And CSA Certified	CSA	Y
CE	N	IP Code	54
Hazardous Location	EXP PROOF CL I GR C&D CL II GR F&G T3B		

### Technical Specifications

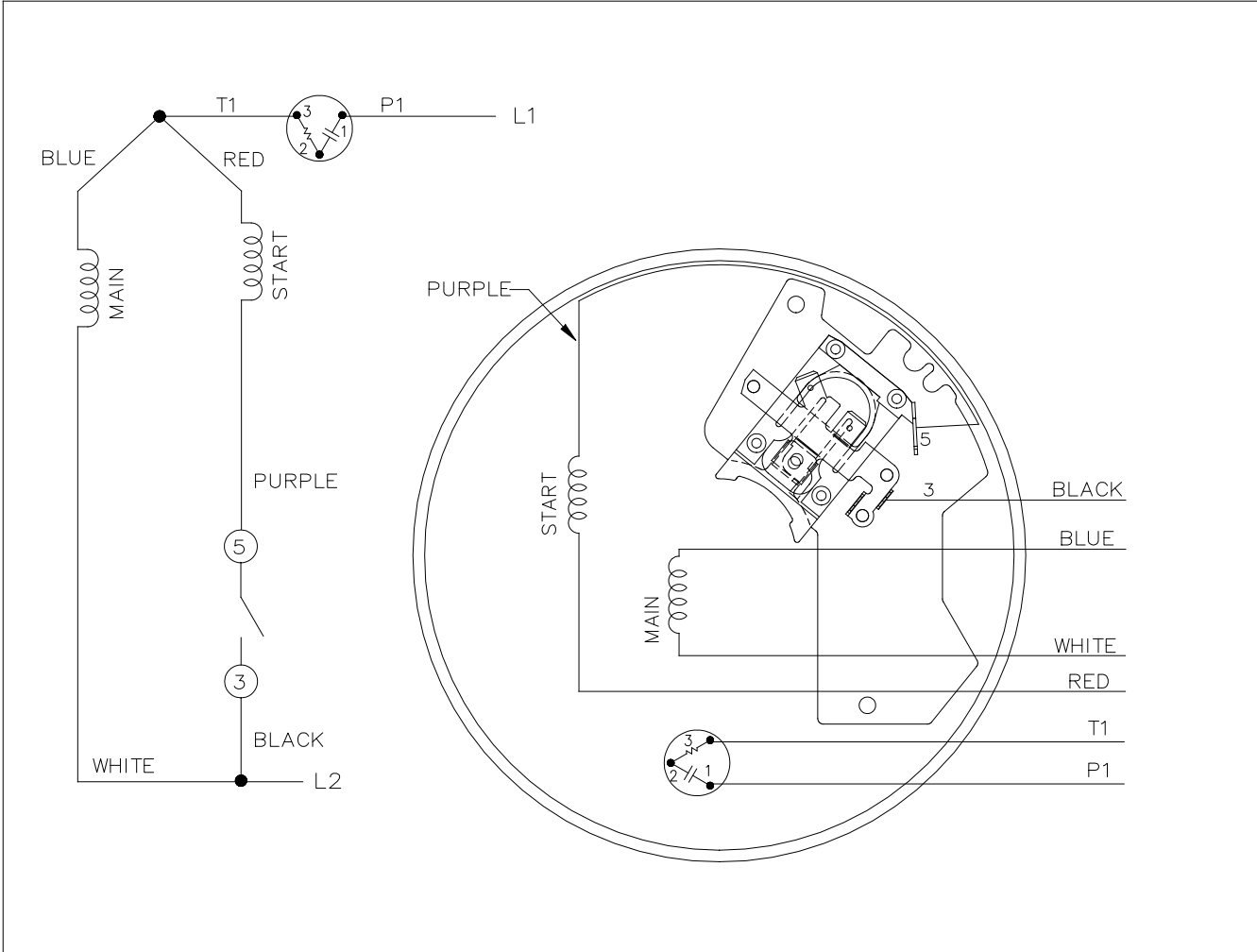
Electrical Type	Split Phase	Starting Method	Across The Line
Poles	6	Rotation	Selective Counterclockwise
Resistance Main	0 Ohms	Mounting	Rigid base
Motor Orientation	Horizontal	Drive End Bearing	Ball
Opp Drive End Bearing	Ball	Frame Material	Rolled Steel
Shaft Type	NEMA 56	Overall Length	12.47 in
Frame Length	6.81 in	Shaft Diameter	0.625 in
Shaft Extension	2 in	Assembly/Box Mounting	F1 ONLY
Outline Drawing	B-104196GE-681	Connection Drawing	A-102008-72



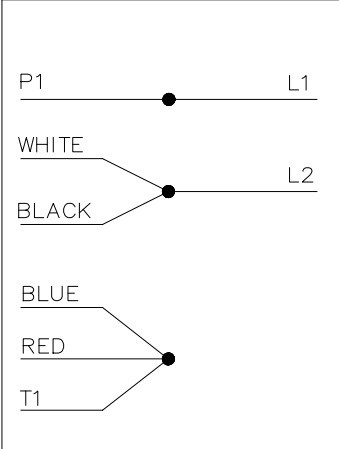
DASH	(C)	BS			
631	11.97	4.15			
681	12.47	4.65			
731	12.97	5.15			
781	13.47	5.65			
831	13.97	6.15			
881	14.47	6.65			
931	14.97	7.15			
981	15.47	7.65			

		TOLERANCES UNLESS SPECIFIED		REGAL-BELOIT CORPORATION		DRAWING NO. 12-06-04	
		DEC.	INCHES	REGAL-BELOIT CORPORATION		CHK	ML 01-12-05
4	COND. BOX INSTALLED VIEW UPDATED PER ECR-0044571	UD	10/15/13	ST	.X	±.1	APPD DRN 01-13-05
3	REVISED C'BOX PER CN40784A	JJB	02/23/2007	ML	.XX	±.03	SCALE 17=32
2	CHANGED LOGO TO REGAL BELOIT	TAT	09-07-2005	ML	.XXX	±.005	REF
1	SHOWED CORRECT LOGO, ADD GE TO PART NO	MJK	12/20/2004		.XXXX	±.0005	FMF
NO.	REVISION	BY & DATE		CHK	ANG	±7'30"	PREV
THIS DRAWING IN DESIGN AND DETAIL IS OUR PROPERTY AND MUST NOT BE USED EXCEPT IN CONNECTION WITH OUR WORK ALL RIGHTS OF DESIGN AND INVENTION ARE RESERVED THIS IS AN ELECTRONICALLY GENERATED DOCUMENT - DO NOT SCALE THIS PRINT				RFP	CAD FILE 104196ge		SIZE DRAWING NO. PAGE OF REV.
				DIST	WP	B	104196GE 4


102008-72



LOW VOLTAGE WITH PROTECTOR SELECT ROTATION



FOR C.W. ROTATION INTERCHANGE RED WITH BLACK LEAD

				TOLERANCES UNLESS SPECIFIED		 <b>Regal Beloit America, Inc.</b>	DRAWN	SKM		
				DEC.	INCHES		CHK			
				.X	±.1		APPD	SKM		
				.XX	±.02		SCALE	5=8		
				.XXX	±.005	TITLE	CONNECTION DIAGRAM	REF	102008-64	
A	NEW DRAWING	SKM	09/05/2017	SKM	.XXXX	±.0005	MAT'L.	FMF		
NO.	REVISION	BY & DATE		CHK	ANG	±7'30"	FINISH	PREV		
THIS DRAWING IN DESIGN AND DETAIL IS OUR PROPERTY AND MUST NOT BE USED EXCEPT IN CONNECTION WITH OUR WORK ALL RIGHTS OF DESIGN AND INVENTION ARE RESERVED THIS IS AN ELECTRONICALLY GENERATED DOCUMENT - DO NOT SCALE THIS PRINT				RFP	CAD FILE 102008-72			SIZE	DRAWING NO. PAGE OF	REV.
				DIST	WP		A	102008-72	5	A

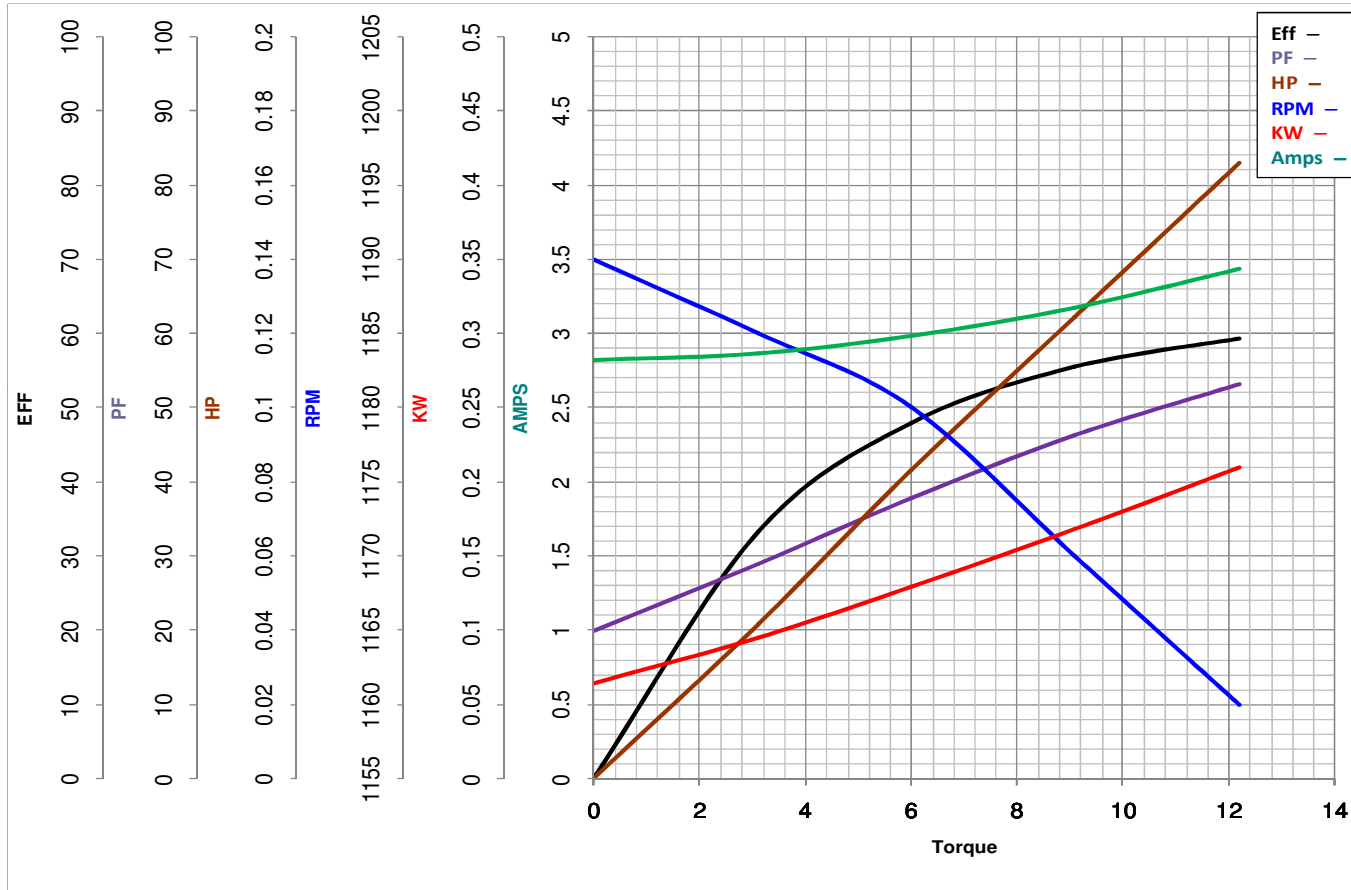






**MARATHON ELECTRIC CORPORATION**  
TYPICAL PERFORMANCE CURVE for AC MOTOR

Customer \_\_\_\_\_ Curve at 115 Volts HP 0.166 PHASE 1  
60 HZ  
 Model No 5KC49LN6386 0.166 HP VOLTS 115  
 Catalog No H891 HZ 60 RPM 1140



			Torque in Oz.Ft		
FL TORQUE	<u>12.2</u>	Oz.Ft	FL AMPS	<u>4.1</u>	
BD TORQUE	<u>28.0</u>	Oz.Ft	PU TORQUE	<u>20.4</u>	Oz.Ft
LR TORQUE	<u>21</u>	Oz.Ft	LR AMPS	<u>29</u>	
WINDING	ZS607-1		Date	<u>2/4/2019</u>	